

INDIVIDUAL ISOLATOR DESIGN PROPERTIES

TYPE OF ISOLATOR	DISPLACEMENTS (ins)				VERTICAL LOADS (kips)			EFFECTIVE STIFFNESS ¹ (kips/in)					
	DD	TD	DM	TM	LT	ST	AL	@DD			@DM		
								MIN	MEAN	MAX	MIN	MEAN	MAX
B1	13	14.1	22.9	26	660	950	290	3.23	3.8	4.37	3.23	3.8	4.37

ISOLATION SYSTEM DESIGN PROPERTIES

TYPE OF ISOLATOR	NUMBER	AGGREGATE EFFECTIVE STIFFNESS @ DD ³ (kips/in)			AGGREGATE EFFECTIVE STIFFNESS @ DM ³ (kips/in)		
		MIN.	MEAN	MAX.	MIN.	MEAN	MAX.
B1	31	100	118	135	100	118	135

NOTES:

DD = DESIGN DISPLACEMENT

TD = TOTAL DESIGN DISPLACEMENT

DM = MAXIMUM DESIGN DISPLACEMENT

TM = TOTAL MAXIMUM DESIGN DISPLACEMENT

LT = LONG TERM MAX. LOAD; (DL + RLL) MAX.

ST = SHORT TERM MAX. LOAD; (1/2DL + RLL + EM) MAX.

AL = AVE. ISOLATOR TEST LOAD; (DL + 0.5 x RLL) AVE.

DL = DEAD LOAD, RLL = CODE REDUCED LIVE LOAD

EM = MCE EARTHQUAKE O/T LOAD

ALL TESTING AND OTHER REQUIREMENTS OF THE 2001 CALIFORNIA BUILDING CODE, APPENDIX CHAPTER 19A, DIVISION IV SHALL BE COMPLIED WITH FOR THIS PROJECT. ADDITIONALLY, EACH ISOLATOR SHALL REMAIN STABLE UNDER LOAD "ST" WHEN STATICALLY TESTED TO DISPLACEMENT "TM".

MINIMUM AXIAL COMPRESSIVE STIFFNESS SHALL BE 9000 KIPS/IN FOR ALL ISOLATORS.

ALL ISOLATORS SHALL BE CAPABLE OF WITHSTANDING A DIRECT NET TENSION FORCE OF 50 KIPS WITHOUT FAILURE AND WITH A DEFLECTION NO GREATER THAN 0.25 INCH.

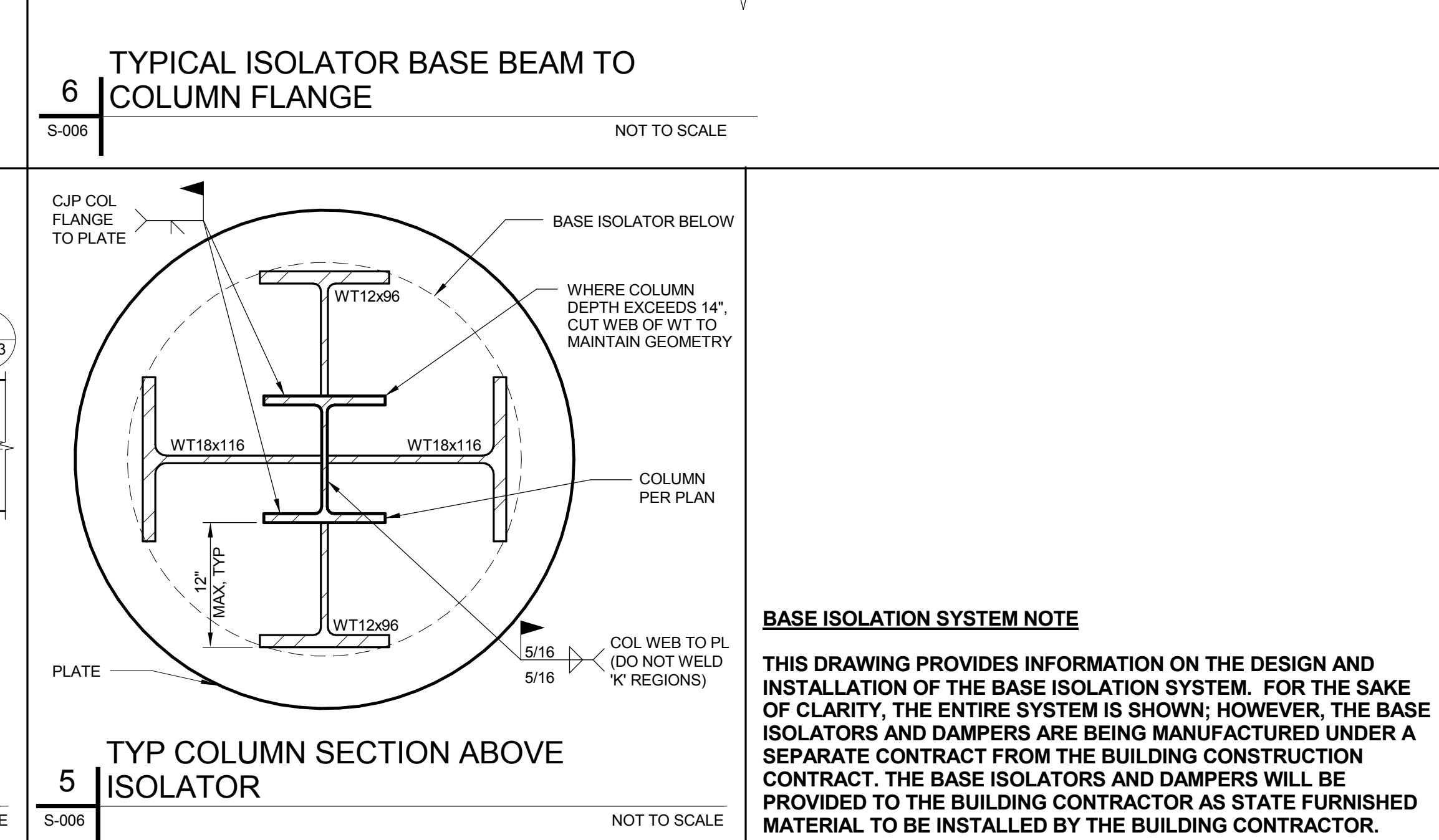
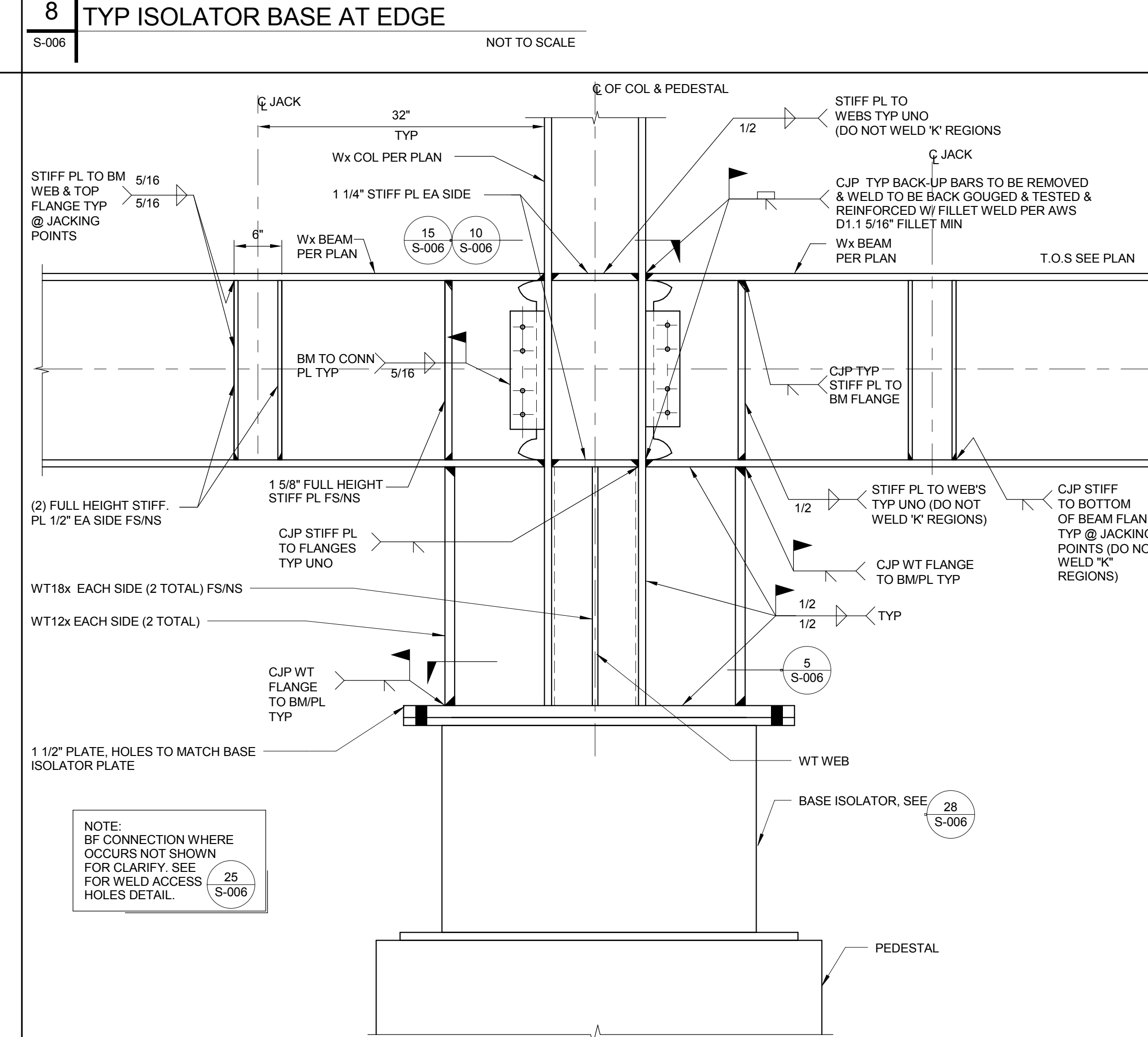
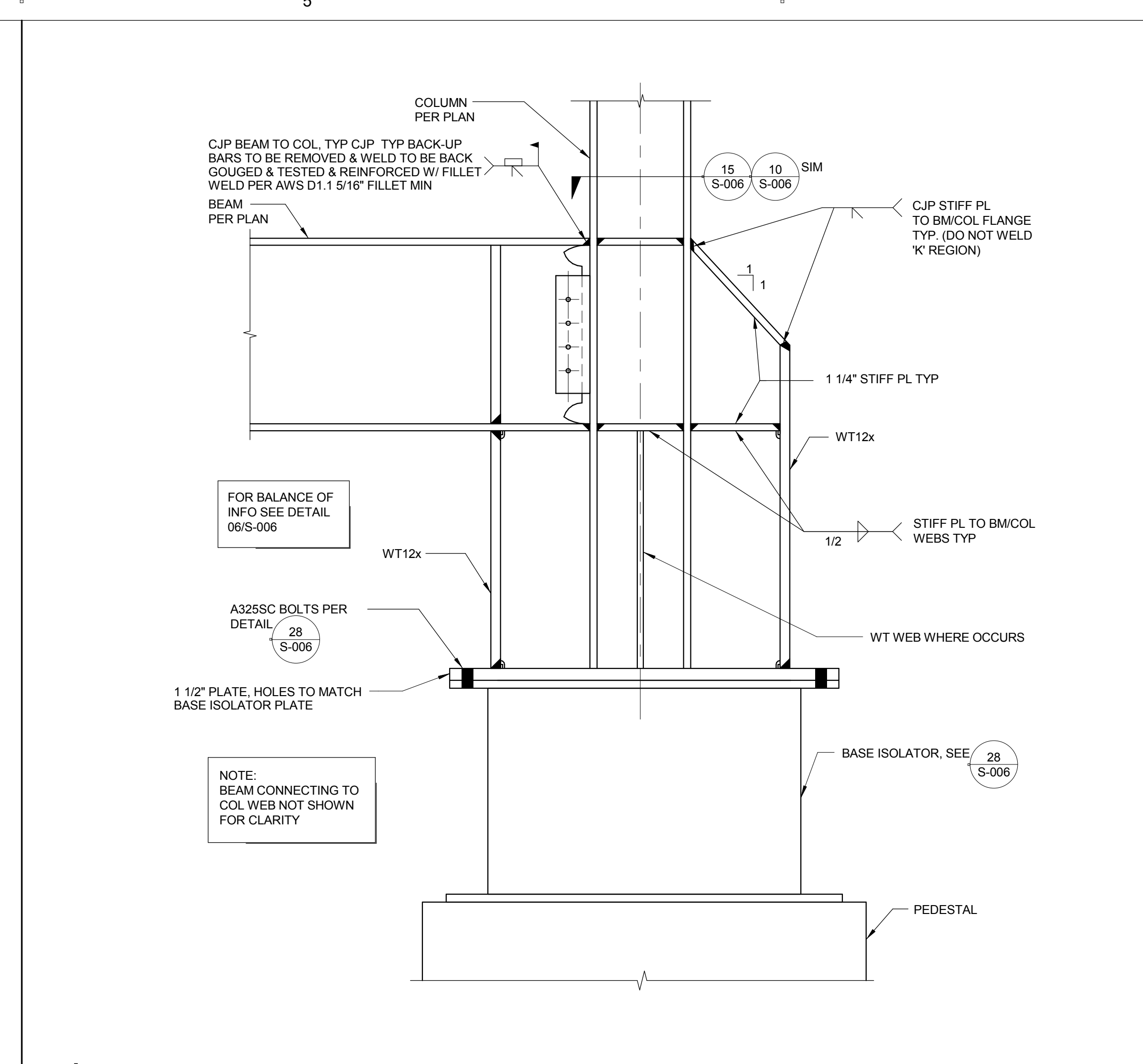
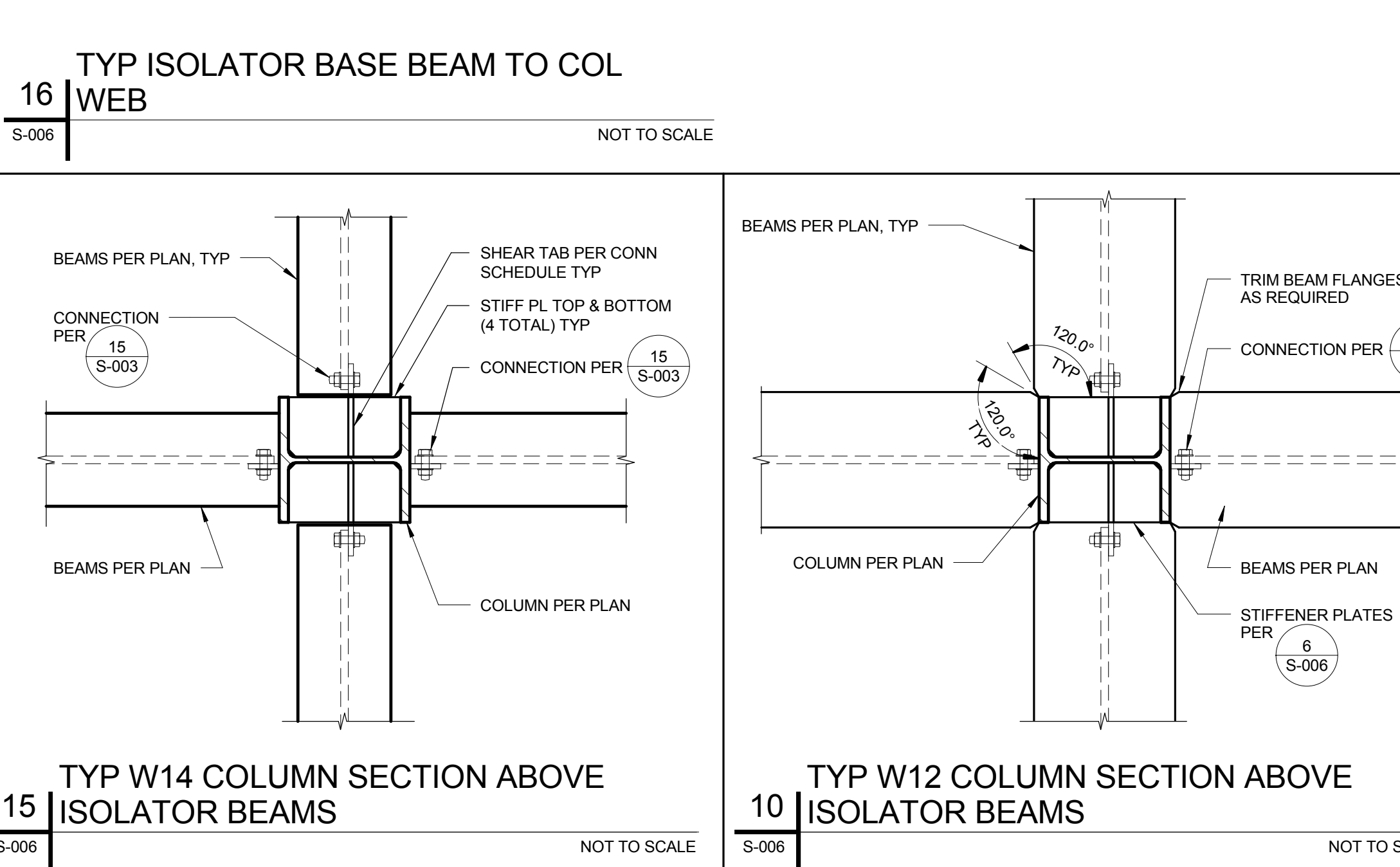
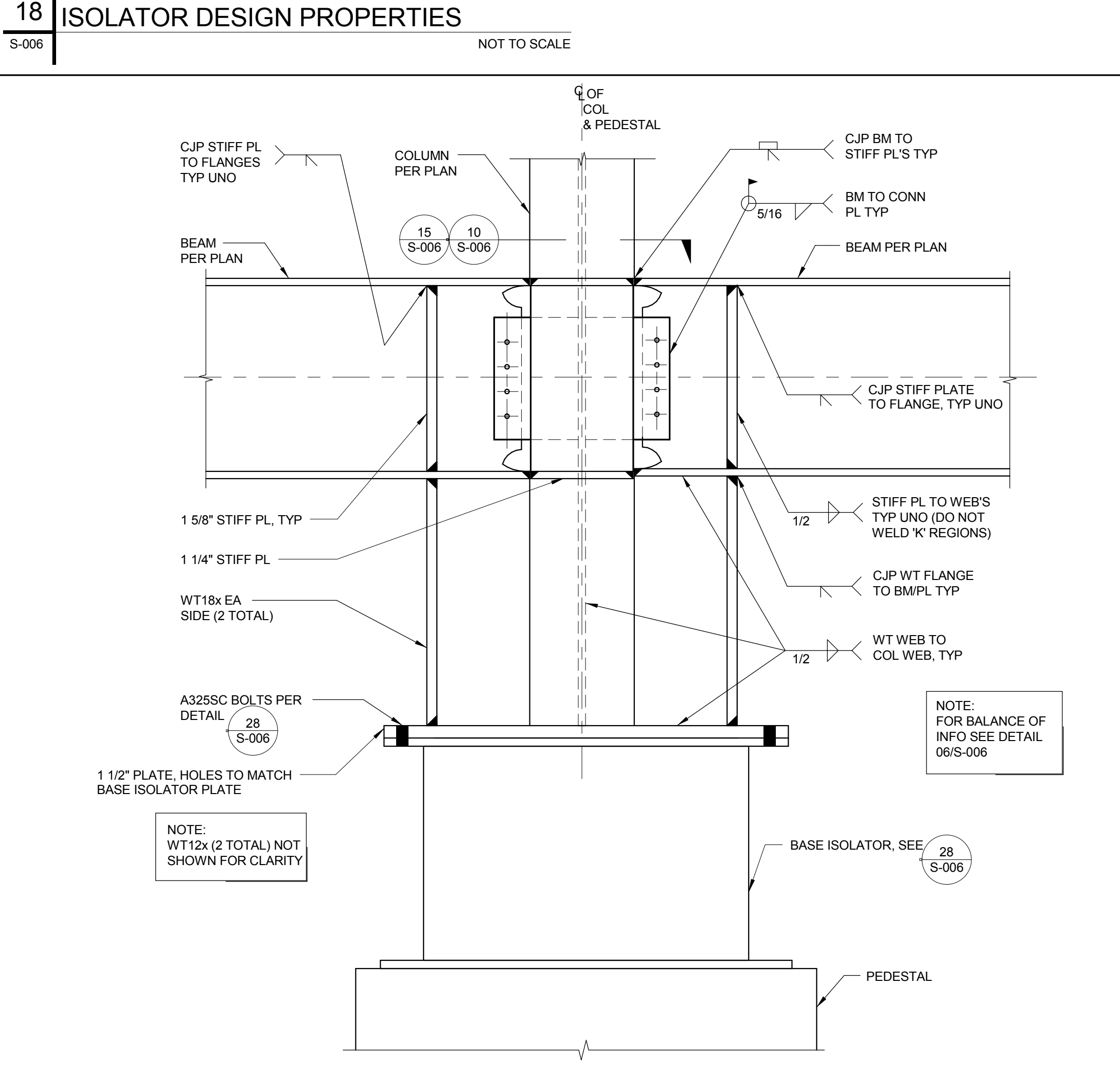
EACH ISOLATOR SHALL LATERALLY DEFLECT NO MORE THAN 2.2 INCH UNDER A MAXIMUM WIND DESIGN LATERAL LOAD OF 10.1 KIPS.

ALL OTHER REQUIREMENTS FOR SEISMIC ISOLATORS GIVEN IN THE PROJECT TECHNICAL SPECIFICATIONS SHALL BE FULLY COMPLIED WITH.

1 TESTED EFFECTIVE STIFFNESS OF EACH ISOLATOR SHALL BE WITHIN THE GIVEN TABULATED VALUES.

2 TESTED EFFECTIVE DAMPING OF EACH ISOLATOR SHALL NOT BE LESS THAN TABULATED VALUES.

3 AGGREGATE EFFECTIVE STIFFNESS FOR EACH TYPE OF ISOLATOR BASED ON THE PROJECT SPECIFIED TESTING AND THE RESULTING SYSTEM EFFECTIVE STIFFNESS SHALL FALL WITHIN TABULATED VALUES.



PROJECT

LAND-EMPIRE INC.
CHP
PROJECT ADDRESS
1382 VICTORIA STREET
FONTANA, CA 92336

CLIENT

DGS
STATE OF CALIFORNIA
DEPARTMENT OF GENERAL SERVICES
REAL ESTATE SERVICES DIVISION
PROJECT MANAGEMENT BRANCH
900 R STREET, SUITE 510
SACRAMENTO, CA 95814
PROJECT DIRECTOR: REG EDEN
TELEPHONE: (916) 376-3719

DESIGNER

DMJM H&N | AECOM
999 TOWN & COUNTRY ROAD, ORANGE, CALIFORNIA 92668
T: 714-557-2400 F: 561-2729 www.dmjmh.com

CONSULTANTS

COFFMAN ENGINEERS
16133 Ventura Blvd., Suite 1010
Encino, California 91436 USA
818 285 2650 Fax 818 285 2651

DSA STAMP

IDENTIFICATION STAMP
DIVISION OF THE STATE ARCHITECT
OFFICE OF REGULATION SERVICE
APPL. #: 04-109200-2
AC: FLS SS
DATE: _____
FILE NUMBER: RESD

STATUS

JULY 30, 2008

ISSUE

MARK	DATE	DESCRIPTION
A	10/31/2008	BID PERIOD ADDENDUM #6
A	9/26/2008	BID PERIOD ADDENDUM

PROJECT NO: 60004333.4000
DRAWN BY: JN/RL/MAR
CHECK BY: JDL

KEY PLAN

SHEET TITLE

BASE ISOLATOR TYPICAL DETAILS

S-006

© 2006 DMJM H&N, INC.